



RMB Designs Inc.



Build Smart ■ Build Simple

EVERYTHING YOU
LOVE ABOUT
**NATURAL
STONE**

WITHOUT THE
HEAVY LIFTING

.....

A Natural Stone Product Brought
To You By Connecticut Stone

The line between fantasy and reality is no longer set in stone. See the unexpected ways that ThinStone™ natural stone veneer can transform your life. Custom cuts, innovative applications and award winning insight—all under one roof.





VALUE EASY TO USE VERSATILE

Graced with beauty as timeless as it is durable, ThinStone™ 100% natural quarried stone veneer is an innovative new product bound to change the face of the industry. Significantly thinner than traditional stone veneer, ThinStone's™ value and versatility translates into lower shipping costs, easy installation, greater coverage with less product and broader application options. Low-maintenance and made by Mother Nature, ThinStone™ is the economical way to bring stone to your home.



“There are no limitations on what can be created.

- Architect Rob Berger A.I.A.

“It's an advancement, a progression, and it's truly economical.

- Mason Contractor Dave Holmes



TRADITIONAL STONE

REVOLUTIONARY APPLICATIONS

Selected from the finest quarries, ThinStone™ channels the essence of traditional stone into a lightweight, easy-to-use and economical true stone veneer, perfect for home improvement projects.

Designed for both interior and exterior applications over brick, concrete or plywood, fade-resistant ThinStone™ is as versatile as it is user-friendly. Approximately five-times thinner than traditional veneer, ThinStone™ can typically be installed without a foundation and is equally suited for use in fireplace facings, chimneys and exterior veneer as it is in more unique, space-sensitive areas, such as ceilings, kitchen range hoods, columns, backsplashes and shower stalls.

Offered in an array of colors, textures and styles, including Strip Cut, Mosaic, Square Cut, Ledge Cut and Rounds, ThinStone™ runs the style gamut – from traditional to modern and everything in between.



Did you know?

Stone is a natural, abundant and extremely durable resource that will not burn, mold, or rot. Its beauty is garnered from the test of time, giving stone a superior lifespan and enduring aesthetic to match.



Going green? Go with ThinStone™. Lightweight and slender, ThinStone™ requires less energy to transport to and around the job site allowing your project to be done using less material. Building with stone is an ideal way to green your home. By its very nature, stone is an environmentally friendly, recyclable resource.



MOSAIC

Size: 6" x 6" to 12" x 18"

Depth: 0.75" to 1.25"

Average Weight: 11 to 13 lbs. per SF

Corners: Mosaic



Blue Ridge Dark



Bryam Black



Colonial Full Range



Colonial Blue



Colonial Lilac



Country Weathered



CT Black Mica



CT Split Fieldstone



CT Weathered Fieldstone



Desert Creek



Desert Creek Large



Desert Creek Mini



RMB Designs Inc.

Did you know?

Way before being green was fashionable, New England farmers of the 1600's repurposed stones from local landfills to build the iconic walls seen around New England today. CT Stone continues this tradition, cutting similar local granite & fieldstone with a technology that gives these materials a new life as ThinStone™ products.

1. CT Weathered Fieldstone, Strip Cut, Mosaic and Square Cut



Hampton Blend



Juperana Gold & Grey



Liberty Hill



Loreda Blend



Old Spruce Mountain



Ponderosa Gold



Ponderosa Variegated



Round Hill Blend



Tierra



Westward Blend



SQUARE CUT

Size: 4" x 4" to 12" x 18"

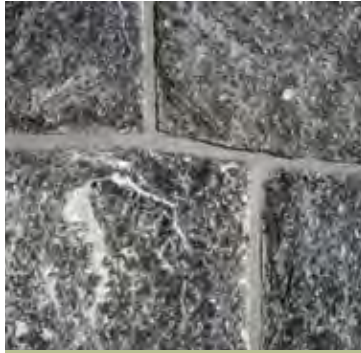
Depth: 0.75" to 1.25"

Average Weight: 11 to 13 lbs. per SF

Corners: Square Cut



Blue Ridge Dark



Byram Black



Colonial Full Range



Colonial Blue



Colonial Lilac



CT Black Mica



CT Split Fieldstone



CT Weathered Fieldstone



Desert Creek



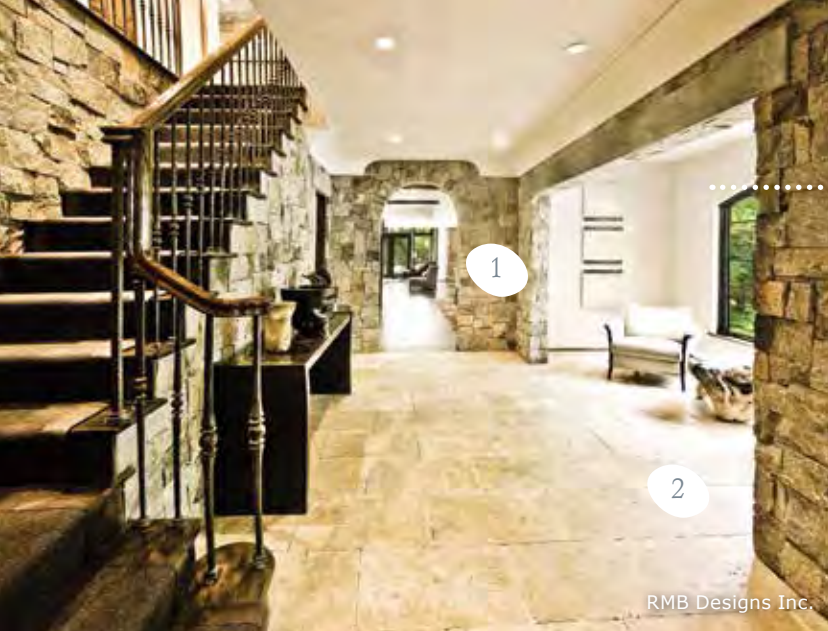
Hampton Blend



Juperana Gold & Grey



Liberty Hill

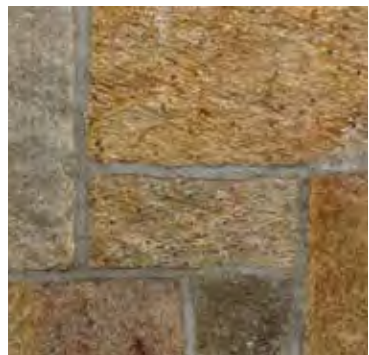


Did you know?

Stone stores and retains heat throughout the day. When the sun goes down, this heat radiates warmth throughout your home, naturally cutting down on winter heating costs. Likewise, stone absorbs the chilly night air, keeping your home cooler on hot summer days.



1. Ponderosa Variegated Square Cut 2. Carmella Travertine 3. Ponderosa Variegated Strip Cut



Old Spruce Mountain



Ponderosa Gold



Ponderosa Variegated



Round Hill Blend



Tierra



Westward Blend



STRIP CUT

Size: 3" x 6" to 6" x 16"

Depth: 0.75" to 1.25"

Average Weight: 11 to 13 lbs. per SF

Corners: Strip Cut



Blue Ridge Dark



Byram Black



Colonial Full Range



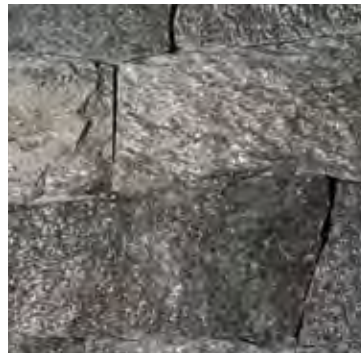
Colonial Blue



Colonial Lilac



Country Weathered



CT Black Mica



CT Split Fieldstone



CT Weathered Fieldstone



Desert Creek



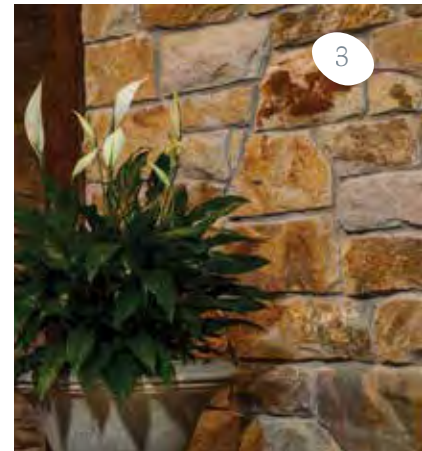
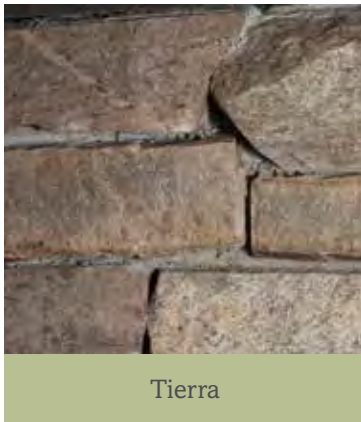
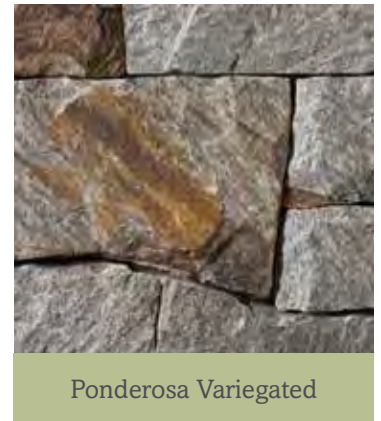
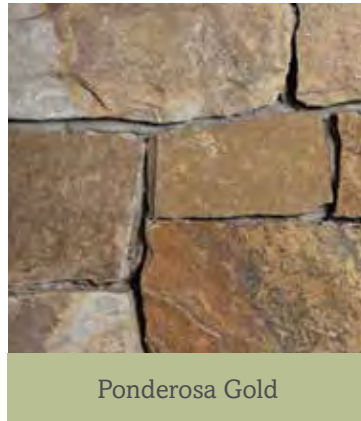
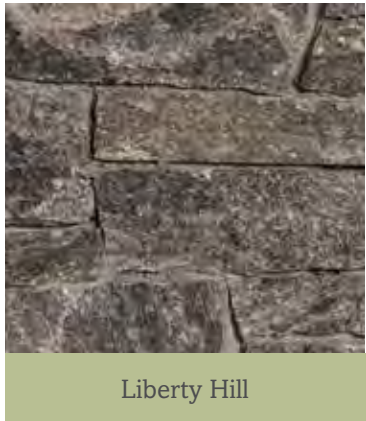
Hampton Blend



Juperana Gold & Grey



1. Old Spruce Mountain Ashlar Strip Cut 2. Azul Aran Granite Polished 3. Ponderosa Gold Strip Cut



Did you know?

Lichen, mosses and algae are three distinct groups of organisms. They frequently colonize stone walls, either in isolation or in combination. Country Weathered and CT Weathered Fieldstone naturally host these types of organisms which contribute to their earthy, organic character.

LEDGE CUT

Size: 1" to 4" high x 3" to 13" long

Depth: 0.75" to 1.25"

Average Weight: 11 to 13 lbs. per SF

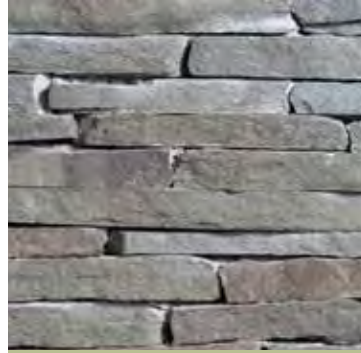
Corners: Ledge Cut



Blue Ridge Dark



Byram Black



Colonial Full Range



Colonial Blue



Colonial Lilac



Country Weathered



CT Black Mica



CT Split Fieldstone



CT Weathered Fieldstone



Desert Creek



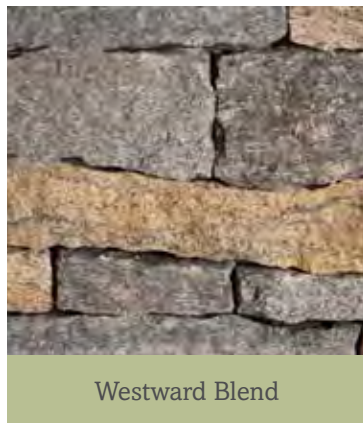
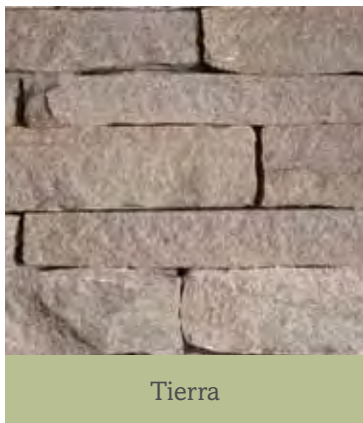
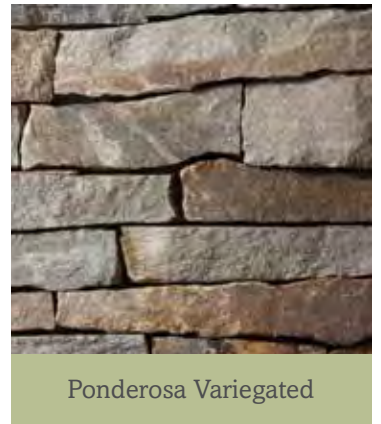
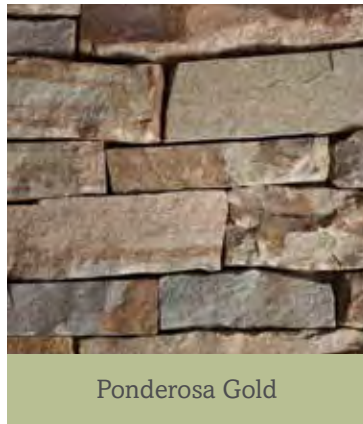
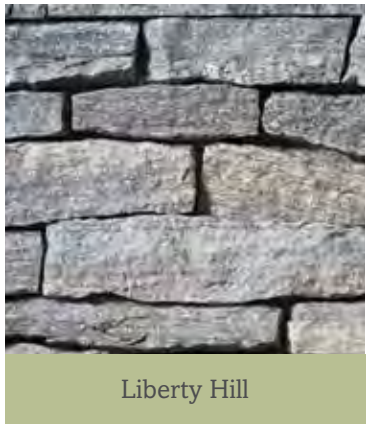
Hampton Blend



Juperana Gold & Grey



1. Colonial Full Range Ledge Cut 2. Hispania Granite 3. Nordic Buff Sandblasted 4. Antique Bluestone 5. Country Weathered Ledge Cut



ROUNDS

Size: $\pm 5"$ to $9"$ diameter

Depth: $1.5"$ to $2.5"$

Average Weight: 11 to 13 lbs. per SF

Corners: Round



Hadrian Rounds



Multicolor Rounds



Nantucket Rounds



Old Redding Rounds



NATURAL THINSTONE™ CORNERS

These pieces are notched to easily wrap the corners of buildings, walls and fireplaces. When installed, ThinStone™ Corners create the appearance of full dimensional veneer.



Ledge Corner



Mosaic Corner



Square Corner



Strip Corner



Round Corner



 Easy Installation

1

PREP INSTALL MAINTAIN

Installing stone veneer has never been easier. Light weight and versatile, ThinStone™ is the simply best product on the market for both do-it-yourselfers and professional builders alike.



2

GENUINE STONE



Connecticut Stone is a member of The Natural Stone Council, which promotes the use of natural stone in commercial and residential applications.

**Coverage may vary significantly when material is trimmed by mason.*

1. CT Weathered Fieldstone Mosaic Cut 2. Juperana Gold & Grey Mosaic with used brick 3. Blue Ridge Dark Square Cut, Liberty Hill Square Cut & CT Split Fieldstone Square Cut



Product Guidelines

The following information provides basic guidelines for architects, engineers and contractors regarding the installation of ThinStone™. Use this information as a basic guideline in conjunction with the local building codes for your particular area. Our resources include the Building Stone Institute and US Gypsum.

Product Specification Description

Stone Type

ThinStone™ is a 100% natural quarried stone veneer. Each stone ranges in size depending upon pattern and material type. Stones are packaged carefully on pallets containing either 100 or 240 SF per pallet for field and 100 LF per pallet for corners.

Usage

ThinStone™ is engineered for lightweight, non-structural installation. The material can be successfully installed without a support ledge provided the weight of the material is less than 15 pounds per square foot.

General Information

Availability

ThinStone™ may be purchased from Connecticut Stone or an authorized dealer. Call (203) 882-1000 to inquire about dealers local to your area.



1. PREP

.....

General Surface Preparation

Concrete Block or Brick

ThinStone™ can be applied directly to any new or existing block or brick surface providing the existing wall is sound and without defects, paints or sealers.

Framed Exterior Walls

Build exterior walls to local building codes. Follow stud size, sheathing and substrate thickness requirements.

Water Proofing Procedures

Listed below are general procedures for waterproofing areas prior to ThinStone™ installation.

Flashing and Moisture Control

Provide a rubber weather shield, flashing or caulk at all material transition points and at any area that could lead to possible moisture penetration, including window and door openings, electrical outlets and electrical or plumbing fixtures. Follow the manufacturer's specification for correct installation methods. Include a weep system behind exterior installations of ThinStone™.



2. INSTALL

for installation tutorials/videos, visit www.connecticutstone.com

Installation Procedures

Mortar

Use Specmix® Polymer Modified Stone Veneer Mortar or Laticrete® Masonry Veneer Mortar for ThinStone™ applications.

Metal Lath

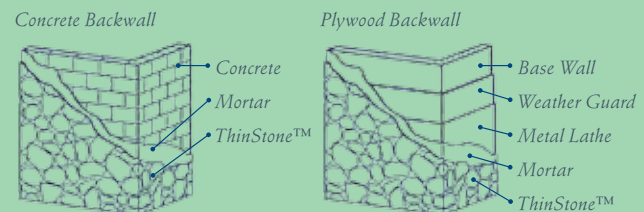
Use paper-backed, non-corrosive wire lath that meets ASTM C847 standards with the manufacturer recommended fasteners. Place and secure the first piece of wire lath at the bottom of the wall. Overlap the next piece of lath at a minimum of 3" and secure into place. Continue installing the wire lath up the wall from the bottom to the top, carefully overlapping each piece.

Bonding Agent

Use a bonding agent mixed with mortar to add additional bonding strength. Refer to the manufacturer's recommendation for mixture quantities. Use extra care with bonding agents as they are difficult to remove once they are cured.

Installing Natural ThinStone™ Veneer

Once the metal lath and scratch coat are complete, proceed with the ThinStone™ installation. If applicable, install the corner pieces first in order to provide a better guide for the pattern to continue around the corner. Most corner pieces have a long and a short end. Alternate these pieces in opposite directions as they are stacked, one on top of the other.



Cover 100% of the back of each stone with at least ½" of mortar. Additional mortar can be added towards the center of the back of each stone. Press the stone firmly against the scratch coat to ensure a sound bond. Excess mortar will ooze out around the edges as each stone is set in place creating grout joints. Alternatively, point the joints with the concrete mixture following installation of the field.

3. MAINTAIN

Cleaning

Wash down the stonework with water and apply a mild cleaning detergent such as Dry Treat Hannafinn Skavenja at least 48 hours after the stone has been installed. Use a stiff nylon brush to remove any dirt or mortar smear left from the installation.

Sealing

If a sealer is required, use a breathable sealer for exterior applications. Breathable sealers such as Dry Treat Hannafinn Stainproof Original can help enhance the color of the stone while protecting against weatherproofing failures that occur over the life of a wall or building. Do not apply the sealer until the stonework and mortar have cured. Follow the specific instructions of the sealer manufacturer.



Build Smart ■ Build Simple



IMAGINE THE POSSIBILITIES

www.ConnecticutStone.com

(203) 882-1000

1



2

